

BiblioTECH Library System

Version 8

“WebLinks™ <API> External Search Engine Manual

[This page intentionally left blank]

Table of Contents

Note: This manual is being continually updated – the latest version is available via our web site

What is the Bibliotech “WebLinks <API>” External Search Engine?.....	4
Installation Prerequisites.....	4
Installing and Configuring the External Search Engine.....	5
“Weblinks” Configuration.....	5
Installing and Configuring the Bibliotech “WebLinks <API>” External Search Engine.....	5
Bibliotech “WebLinks <API>” External Search Engine Manager.....	5
BiblioTECH Server.....	5
“WebLinks” Configuration.....	5
“Library”.....	5
“APIkey”.....	5
“Test” Button.....	5
[Save].....	5
Accessing “WebLinks” Media via Bibliotech.....	6

What is the BibliOTECH “WebLinks <API>” External Search Engine?

The BibliOTECH “WebLinks <API>” External Search Engine provides BiblioTECH users with federated searching of the “WebLinks” data.

“WebLinks” is a product which provides a list of web URLs that are applicable to schools.
For details refer to their website <http://www.weblinksresearch.com>.

Note : There are two different subscription for Weblinks – Monthly File & API

This document refers to the “**API**” subscription
There is a separate engine that can process the Monthly File subscription

By using the BibliOTECH “WebLinks <API>” External Search Engine, library users will be able to search for and then hot-link to the target websites.

The BibliOTECH “WebLinks <API>” External Search Engine is standard Windows Service.

This Engine is not included in the core BibliOTECH Server installation. However, if needed, it can be downloaded via the BibliOTECH web site and installed on your BibliOTECH Server computer.

Installation Prerequisites

- The BibliOTECH “WebLinks <API>” External Search Engine SETUP executable
(download from www.bibliotech.com.au)
- A BibliOTECH Version 8 System
- A Windows “Administrative Level” UserID & password
- A subscription to the LinksPlus “WebLinks <API>” product
- Network access from the BiblioTECH server computer to the “Weblinks” interface
host <http://www.weblinksresearch.com>
port 80

Installing and Configuring the External Search Engine

Note : You should only install one of the BiblioTECH “Weblinks” Search Engines

“Weblinks” Configuration

Subscribers to this service are able to directly link to the LinksPlau “WebLinks” system to perform queries in real time.

The BiblioTECH “WebLinks <API>” External Search Engine requires that any computer and network firewall and routing rules allow traffic between the BiblioTECH server computer and the WebLinks website. That is, port 80 to the URL <http://www.weblinksresearch.com>

Installing and Configuring the BiblioTECH “WebLinks <API>” External Search Engine

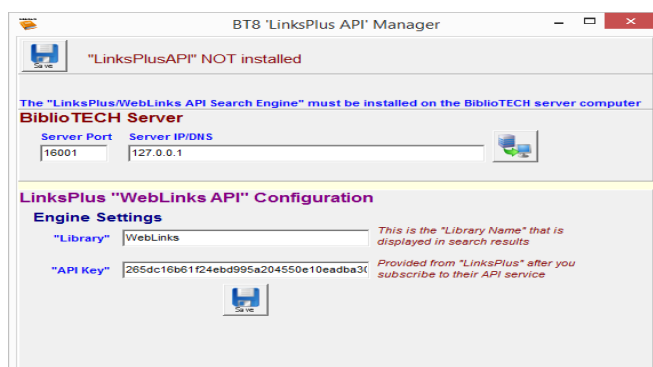
Note : This engine must be installed on the BiblioTECH server computer.

Download and copy the BiblioTECH “WebLinks <API>” External Search Engine SETUP executable to the BiblioTECH Server computer and run it. Accept all default options.

Bibliotech “WebLinks <API>” External Search Engine Manager

Start the manager

(Start → Programs → BiblioTECH V8 → BiblioTECH WebLinks <API> External Search Engine Manager)



BiblioTECH Server

Set the port and IP/DNS address of the BiblioTECH – should be 16001 and 127.0.0.1

[Save]

When you have updated the settings, you need to click on the [Save] button. This will save the settings then restart the “WebLinks” External Search Engine service.

“WebLinks” Configuration

“Library”

When a search is performed, results from this engine will be reported as in this “library”

“APIkey”

This is the special “APIkey” supplied by LinksPlus when you subscribe to their service. It is required so that the API will respond

[Test]

Once configured and the service is running, clicking on this button will perform a search via the engine for the term *picasso* . This should return a number of results (currently 17)

Accessing “WebLinks” Media via BiblioTECH

When the external search engine starts up, it will register itself with the BiblioTECH server.

When a Search client is started, it will check to see which engines are available. If any external engines are registered, Search will display a selectable list of these – you can search all or any combination of these engines.

Note : If you turn all engines OFF, the system will default to searching ALL engines.

Once the “WebLinks <API>” External Search Engine is operational, the “WebLinks” information will be fully searchable via the BiblioTECH Search module. If a “WebLinks” entry is found, the linked program can be started in a browser by switching to “Detailed View” and clicking on the URL link.

NB Refer to the BiblioTECH Users Manual for information relating to using the Search module.